



BUFFINGTON HOMES™
OF ARKANSAS

Wescott

Wescott is a 2,425 SF Single Level Home with Four Bedrooms and Two and a Half Bathrooms. Additional features include a Large Covered Porch, 2+ Car Garage, Dining Room, Large Master Bedroom, Large Closets, and a Patio. There are many more options and upgrades to select from



Harmon Grove

At Central Park , Bentonville
www.BuffingtonHomesAR.com

Wescott

+Granite Counter tops in the Kitchen

+Designer Faucets and Plumbing Fixtures

+Tumbled Stone, Ceramic and Glass Tile Backsplashes in the Kitchen

+Extensive Recessed Can Lighting

+Spacious and Private King Sized Master Suite

+Granite Vanity Counter Tops in the Master Bath

+Walk-in Shower and Jacuzzi Tub in the Master Bath

+Large Walk-in Closets

+Hardwood Flooring in Entry, Dining Room, Family Room (varies by plan)

+10' Ceilings Throughout All of the First Level on Single and Two Level Plans

+Covered Front Porch

+Patio off of Breakfast Area

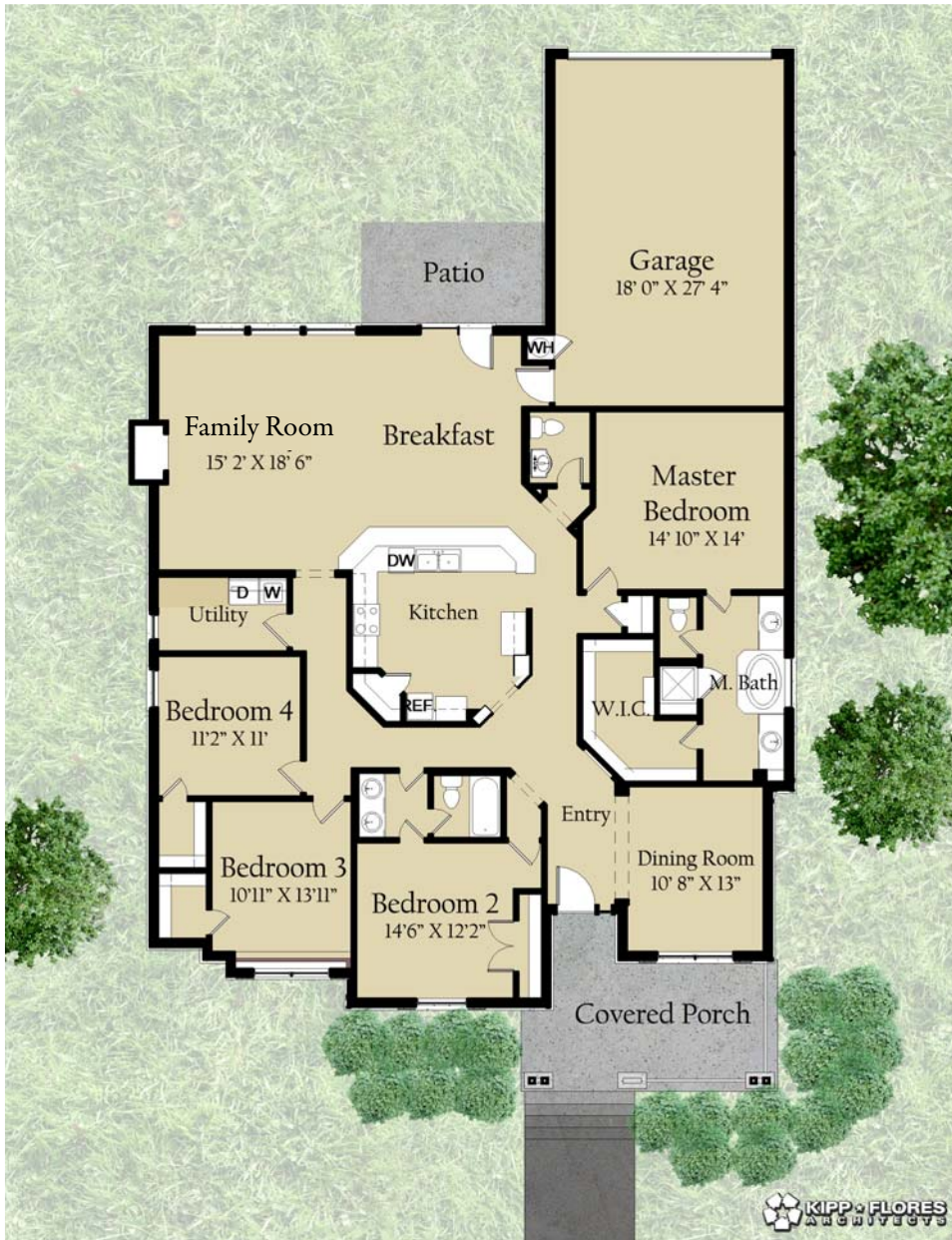
+Crown Molding and Tall Baseboard Trim Throughout

+Open Spacious Floor plans

+Gas Log Fireplace with Wood Mantle and Trim

+Ceramic Tile Flooring in Wet Areas

+Many Options to Select from for Creating Your Custom Dream Home



Harmon Grove
At Central Park , Bentonville

For more information, visit our website at www.BuffingtonHomesAR.com

Elevations shown are artist's concepts. Prices, plans, specifications, square footage and availability are subject to change without notice or prior obligation. Square Footage is approximate and may vary upon elevations and/or options selected.